



LESTAGRI



EUROMASSE

Specialists in the design of innovative and versatile
cast iron and steel weights
basics and modular weights, from 250 kg to 2850 kg
... and much more !



TOUS NOS PRODUITS
SONT DE FABRICATION
FRANÇAISE

Tel. +33 (0)5 82 81 97 50
lestagri.euromasse@gmail.com

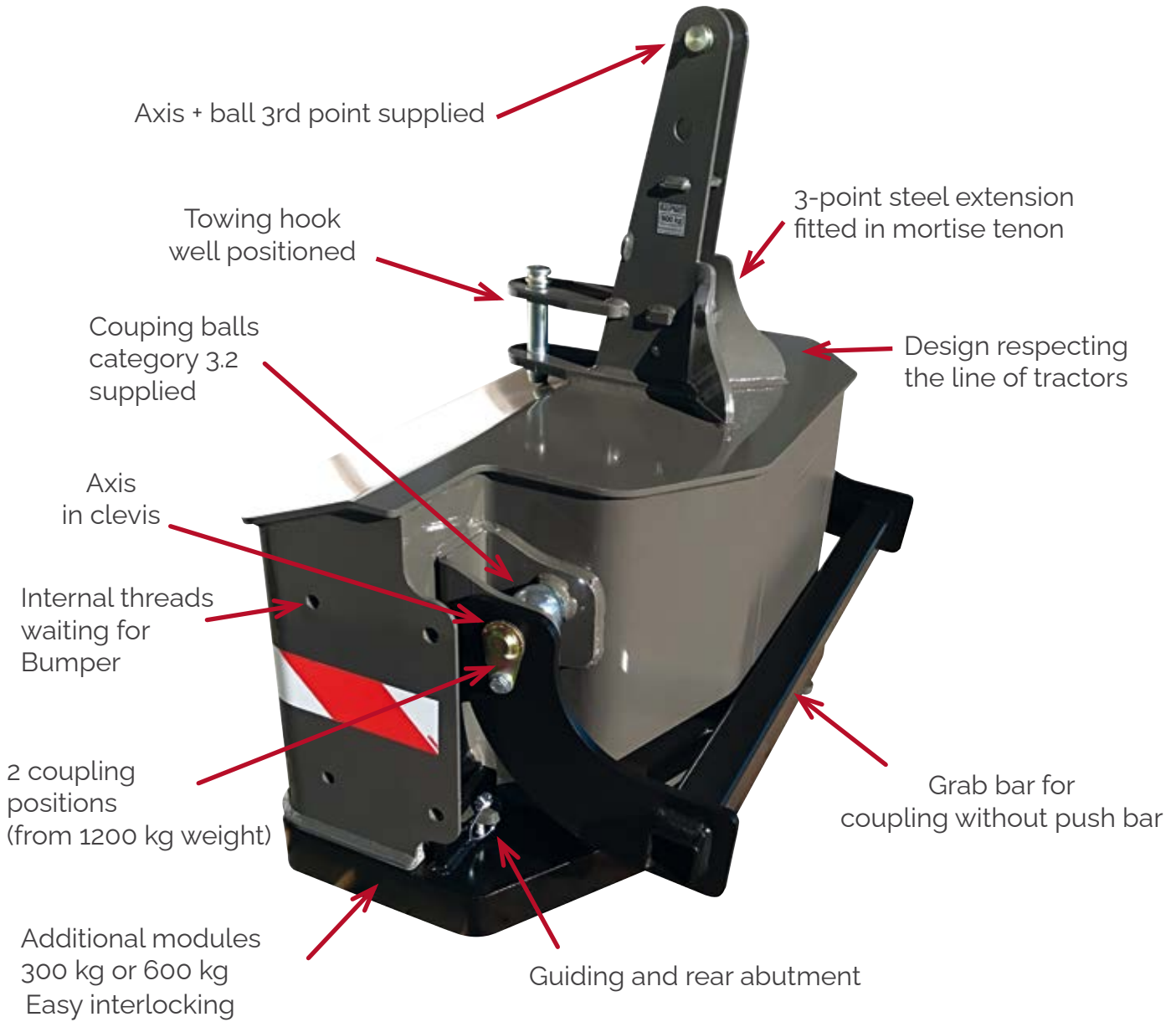
euromasse.com
lestagri.fr

SUMMARY

STEEL WEIGHTS LESTAGRI	3
Basic and modular weights from 250 kg to 2000 kg	4
Accessories	6
CAST IRON WEIGHTS EUROMASSE	8
Basic weights 850 kg and 1400 kg	8
Evolutive weights from 600 kg to 2 850 kg	10
Accessories	16
BUMPER	18
Bumper model complete	18
Bumper model Eco	21
REAR WEIGHTS / DRAWING TOOLS	22
Basic weights end modular weights	23
Rear weight LESTRACTION from 1900 kg to 2500 kg	25



TOUS NOS PRODUITS
SONT DE FABRICATION
FRANÇAISE



STEEL/CAST IRON WEIGHTS



LESTAGRI

BASICS WEIGHTS



250 KG
Réf. : MB250A



400 KG
Réf. : MB400A

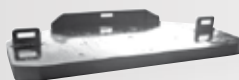


Two basic weight adaptable on vine-grower tractors and fruit trees tractors, in front or back in cat. 1 and have a double coupling in cat. 3/2 for standard tractors.

EVOLUTIVES WEIGHTS



WEIGHT EVO 500 KG
Réf. : MBE500PFA



MODULE 300 KG
Réf. : MD300B



MODULE 600 KG
Réf. : MD600B

PACK 800 KG
Réf. : MBE5300PFB

PACK 1100 KG
Réf. : MBE5600PFB



Modular weight 500 kg with frontal tool box : large volume 125 L ideal for storing tools, grease pumps, cans, accessories, etc.
+ locking system : possibility to add a lock.

Interior caisson :
Long. : 105 cm x Haut. : 40 cm x Prof. : 30 cm env.

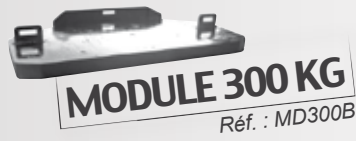


WEIGHT EVO 600 KG
Réf. : MBE600A



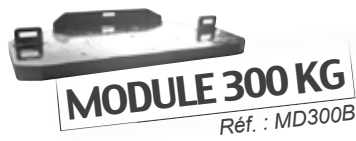
MODULE 400 KG
Réf. : MD400B

PACK 1000 KG
Réf. : MBE6400B



PACK 1200 KG
Réf. : MBE9300B

PACK 1500 KG
Réf. : MBE9600B

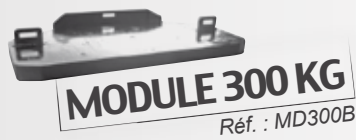


PACK 1200 KG
Réf. : MBE9300PFB

PACK 1500 KG
Réf. : MBE9600PFB

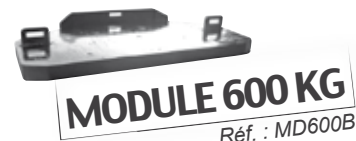


Modular weight 900 kg with integrated front tool box : large volume of approx. 140 L ideal for storing tools, pumps grease, cans, accessories, etc. + locking system : possibility to add a padlock.



PACK 1500 KG
Réf. : MBE12300B

PACK 1800 KG
Réf. : MBE12600B



PACK 2000 KG
Réf. : MBE14600B

- ✓ **CUSTOMIZABLE** to the concession logo.
- ✓ **SAFE AXIS IN CLEVIS** (coupling balls supplied) for maximum reliability, and reflective strips for maximum visibility.
- ✓ **MODULAR** through the use of modules from 300 kg, 400 kg or 600 kg.
- ✓ **ASSEMBLY VERY EASY**, in reverse for enhanced visibility, due to the coupling range of 25 cm.
- ✓ **COMFORTABLE** with accessoires « push bar », coupling is achieved without a thrust bar and without leaving the driver seat, including for the modules.
- ✓ **PRACTICAL**, have 2 coupling heights for masses 1200 kg and 1400 kg (also possible for 500 kg, 600 kg and 900 kg on request).
- ✓ **COMPACT** from the coupling balls axis, offset is reduced due to the density of the material. For example : for the 1500 kg pack (900 kg + 600 kg) : offset 400 mm. For the 1800 kg pack (1200 kg + 600 kg) : offset 470 mm.
- ✓ **ATTRACTIVE DESIGN** is a perfect match for the nex tractor bodies, 4 couleurs disponibles en fonction du châssis du tracteur
- ✓ **EXCELLENT** quality / price ratio.



ACCESSORIES : PUSH BAR FOR QUICK COUPLING



ALL LESTAGRI weights have the option of an easily adaptable **push bar**, to avoid attaching the 3rd point and the descent of the tractor.

Get maximum working comfort !



ACCESSORIES : WEIGHT CARRIER ADAPTER INTERFACE

Allows you to adapt a LESTAGRI weight on a weight carrier original John Deere. Accessorie equipped with automatic coupling hooks.

6 weights are possible :
500 Kg / 600 Kg / 800 Kg / 900 Kg / 1000 Kg / 1200 Kg.

3 possibilities of adaptation :

- ✓ By suspending the weight ;
- ✓ Using handling forks ;
- ✓ Without get off the tractor, by deactivating the suspension.

The user adapts or removes weight **with ease and without physical effort**.



Evolutive weight 600 kg



Evolutive weight 1000 kg



Evolutive weight 1200 kg



ACCESSORIES : WEIGHT CARRIER ON LESTAGRI WEIGHT

We can adapt a tool holder interface on front LESTAGRI weight on request.

This accessory allows you to carry different tools (reserves, tubs, tipper, ...).

Has two automatic hooks.

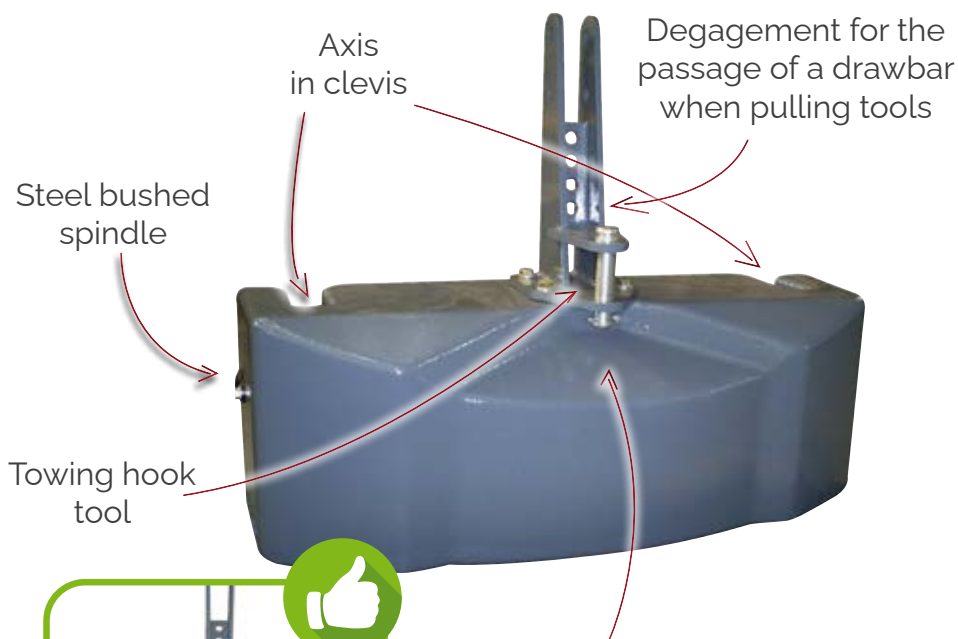


BASIC WEIGHTS IN CAST IRON

See our vidéos on euromasse.com lestagri.fr

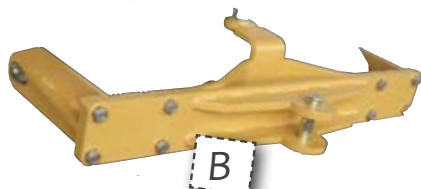
Basic weights are **compatible front en rear** due to the axis in clevis and their compact appearance. The basic weights provide the possibility **to carry up to 4 tons and to tow tools up to 12 tons** to gain maximum grip (see p.24 for the accessory «traction frame»). A multipurpose weight !

EUROMASSE



VERSATILE ON BACK LIFTING (P.24)

- ✓ Solidly screwed in inserts steels, into the cast iron block..
- ✓ Drive of tools with timon up to 12 tons.
- ✓ Accesory frame of drive of tools ;
A version for tools semi carried
B version for drawn tools



BASIC WEIGHTS IN CAST IRON



- ✓ **QUALITY** 100% cast iron for strength.
- ✓ **RELIABILITY** due to the axis in clevis : the spindles are pinned into the cast iron block for maximum strength.
- ✓ **STRENGTH** of the 3-point steel extension, fitted in Mortise tenon and screwed into inserts cast in the iron block, for exemplary reliability (CTIF* standard).
- ✓ **EASY ADAPTATION** using captive ball-joints in the dedicated recesses behind the cast iron block (axis in clavis). The entry is bevelled to facilitate entry of the lifting arms. Possibility to adapt the iron cast to the tractor, without descending from the vehicle thanks to the «grab bar» accessory (see p.17).
- ✓ **VERSATILE** compatible for front and rear lifting system and with weight supports on certain models (with the accessory shown on p.13).
- ✓ **PRACTICAL** adaptation of the accessory « Tool traction frame » to gain grip. Towing semi mounted or dragged tools up to 12 tonnes (safety test coef. 2, see p.24).
- ✓ **COMPACT** maximum offset of 27,5 cm for the 850 kg weight, and 37,5 for the 1400 kg weight.
- ✓ **ATTRACTIVE** smooth fine granite finish. The classic design is modern and matches modern tractors.
- ✓ **COMPLETE** supplied with a 3-point extension, spindle and 3-point pin, 2 spindles in clevis with coupling ball-joints, categories 3.2.

MODULAR WEIGHTS

See our vidéos on euromasse.com
lestagri.fr

The broad range of **modular weights** (3 basics cast iron + frontal and ventral modules) and the various assembly possibilities make these a **multi-function product**.

3-point extension, firmly screwed into metal inserts cast in the iron (CTIF standard)

Practical, useful, a tool box integral in the weight (from 800kg).

Reliable and strong the axis in clevis : the spindles are embedded in the cast iron.



2 positions for enhanced compatibility (from 1450 kg)



Easy, comfortable, the weights are installed without leaving the driver seat



Compact, due to the density of the cast iron, for a long life cycle



- ✓ **CHOICE OF MODULARITY** from 3 basic masses 600 kg/ 800 kg/ 1450 kg, possibility to obtain more than 13 different weights according to the needs and tractors
- ✓ **QUALITY 100% CAST IRON** for density, strength and long working life.
- ✓ **RELIABILITY** through the axis in clevis : the spindles are pinned in the cast iron block and give a choice of 2 heights (depending on the model).
- ✓ **SIMPLE COUPLING** through captive ball-joints in dedicated recesses behind the cast iron block (axis in clevis). The entry is bevelled to facilitate the entry of lifting arms.
- ✓ **STRENGTH** of 3-point extension, mounted in Mortise tenon for exemplary reliability (CTIF* standard).
- ✓ **DESIGN** smooth fine granite finish, classic and modern. Many colours available.
- ✓ **COMPLETE** supplied with 3-point extension, spindle and 3-point pin, 2 spindles in clevis with coupling ball-joints, category 3.2.3-point ball-joint supplied from 1450 kg.

ADVANTAGES OF MODULAR WEIGHTS

✓ **An integral stowage box**

Using the 800 kg basic weight : = 15 L
 Using the 1450 kg basic weight : = 30 L



✓ **The 2-height safety screed coupling for maximum versatility :**

Axis in clevis provides safe adaptation, failure is impossible

Position 1 : places the weight in the flowest position, for optimal grip (standard position).

In position 2, the weight coupled at the rear provides unobstructed access to the hook or to the oscillating bar.



✓ **Three assembly possibilities**

The additional modules are assembled like a jig-saw puzzle, without leaving the driver seat, easily and with no physical effort.

- By operating the lifting for front weights, and by by operating forward motion for the ventral weight.
- With handling forks on vehicles such as fork-lift trucks, through the openings provided on the front modules.
- By suspending the modules, using the threaded inserts on the front of the add-on weights.



✓ **4 available colors** and other colors on request.



EVOLUTIVE WEIGHT 600 KG



- ✓ Axis in clevis for enhanced safety and tractor compatibility
- ✓ Compatible with front and rear lifting system and with weight supports on certain models.
- ✓ Compact : offset 22 cm on lifting arm and 30 cm on weight support.
- ✓ Practical, 2 coupling heights.
- ✓ Integral manoeuvring clevis.
- ✓ Supplied with spindles + 3-point pin + 2 spindles in clevis complete with ball-joints cat. 3.2.

EVOLUTIVE WEIGHT 800 KG

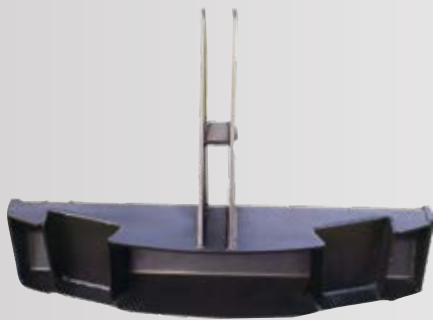


- ✓ Axis in clevis for enhanced safety and tractor compatibility
- ✓ Integral tool box, volume 15 L.
- ✓ Compatible on front/rear lifting arms
- ✓ Compact with an offset off 33 cm.
- ✓ Integral manoeuvring clevis.
- ✓ Supplied with spindles + 3-point pin + 2 spindles in clevis complete with ball-joints 3.2.



OBTAIN MORE WEIGHTS : 400 KG ET 600 KG

✓ With the front modules extension accessory can be adapted to use 400 kg and 600 kg front weights on the tractor 3-point lift.



EVOLUTIVE WEIGHT 1450 KG

GET UP TO 6 DIFFERENT WEIGHTS, AND MUCH MORE THANKS TO ACCESSORIES !



**WEIGHT EVO
1450 KG**

Réf. : E031114500



+

FRONTAL 400 KG (B)

Réf. : A03110600B



+

FRONTAL 800 KG (B)

Réf. : A03110800B



+

VENTRAL 600 KG (B)

Réf. : A03110600B

- ✓ 6 weights can be obtained with the additional modules
- ✓ Modular without getting off the tractor
- ✓ Compatible on front/rear lifting system
- ✓ Integral stowage box 30 L, 65 cm wide, with its lid
- ✓ 2 heights positions, for adaptation to meet needs
- ✓ Compact : offset of 40 cm (for the 1450 kg weight).
- ✓ More modularity thanks to the accessory
Extension for front modules *see in p.16.*
- ✓ Supplied with spindles + 3-point pin + 4 spindles in clevis complete with ball-joints cat. 3.2



WEIGHT 1450 KG

Réf. : E031114500



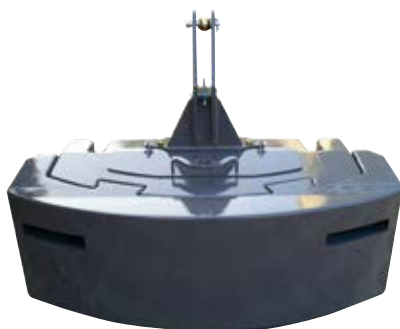
PACK 1850 KG

Réf. : E031118500



PACK 2050 KG

Réf. : E031120500



PACK 2250 KG

Réf. : E031122500



PACK 2450 KG

Réf. : E031124500



PACK 2850 KG

Réf. : E031128500



1 450 KG WEIGHT



PACK 1 850 KG



PACK 2 050 KG



PACK 2 250 KG



PACK 2 450 KG



PACK 2 850 KG

ACCESSORIES FOR EVOLUTIVE WEIGHTS RANGE

✓ **The traction frame for semi-carried tools (A)**

is adjustable in cat. 2 and cat. 3 by simply reversing the hooks. Ballasting is simplified with automatic pinning. It accepts semi-carried tools (Cover Crop, harrow, semi-direct, etc.) in 2-point couplings (see p.19)



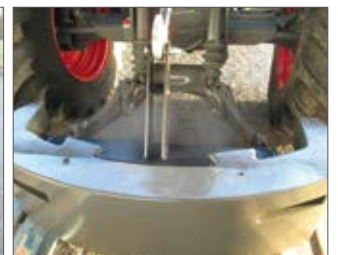
✓ **The traction frame for drawn tools (B)**

Allows ring tools to be used, for enhanced grip. Traction up to 12 tonnes (see p.19)

ACCESSORIES FOR EVOLUTIVE WEIGHTS RANGE

✓ **Extension for front modules A and B***

- Allows 400 kg-A, 600 kg-A and 800 kg-B additional front modules to be used.
- 2 tractors can be ballasted simultaneously, with an extension + an adapter pack.
- Strong, due to mortise-tenon assembly and axis in clevis adaptation. .
- Compatible on front and rear lifting arms (720 mm and 880 mm spacing).



✓ **Tool carrier/front support** with automatic hooks**

- Multi-function : allows various tools to be carried (reserves, skips, weights, etc.) Features two automatic hooks.

For a maximum of modularity !

- Enhanced flexibility: Combine 2 weights to obtain up to 26 different weights.



*Version A for 400 kg-A and 600 kg-A front modules, and version B for 400 kg-B and 800 kg-B front modules.

**For all modular weights, except the 1450 kg weight.

✓ *Push bar for fast coupling*

All Euromasse weights accept the push bar option that is very easily adapted to avoid the 3rd point coupling. To couple and uncouple your farming weight without leaving the driver seat



✓ *Weight support interface /JOHN DEERE tool carrier interface*

Allows an Euromasse weight to be compatible with a weight support (basic weights and modular weights up to 1450 Kg) . Steel accessory equipped with automatic coupling hooks. Eliminates the need for front lifting equipment

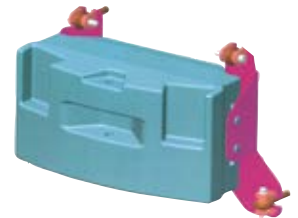


3 adaptations possibilities :

- By suspending the weight ;
 - With the help of handling forks ;
 - Without getting off the tractor, by deactivating the suspension.
- The user fits or removes the weight with ease and without physical effort.

✓ *Adaptation on SETRA plate*

The interface allows Euromasse weights to be compatible with a SETRA plate. The weight can be used again for front/rear arms. Small front offset due to the density of the cast iron.



Three interface models for adaptation on a SETRA plate :

- SETRA 600 interface : for modular weights from 600 kg to 1000 kg/1200 kg.
- SETRA 800 interface : for modular weights from 800 kg to 1200 kg/1400 kg, and for basic weights 850 kg and 1400 kg.
- SETRA 1450 interface : for modular weights from 1450 kg to 2850 kg



A hook is provided at the centre of gravity, to suspend the weight. Location is by two cones and locking is by 4 fold-down clamps on the SETRA plate



BUMPER

See our vidéos on :
euromasse.com
lestagri.fr



- ✓ **ADJUSTABLE** in width, as a function of the tractor track, and in height using the lifting system.
- ✓ **CONFORT** adjustable without tools or physical effort. Weights are modular with or without Bumper.
- ✓ **COMPACT** folds down on both lateral sides of the weight, according to needs and work.
- ✓ **COMPATIBLE** with all our weights, basic and modular.
- ✓ **CHOICE OF WEIGHTS** from 500 kg to 2850 kg.
- ✓ **COMPLETE** supplied with LED lights, red and white reflectors, clearance sights and lights.
- ✓ **ATTRACTIVE** matches tractor colour.
- ✓ **CUSTOMIZABLE** concession logo on the weight.



BUMPER



**SAFETY AND EASTHETIC
ON THE ROAD**



**VISIBILITY AND EASY
TO HANDLE IN FIELDS**

OPEN : USE ON THE ROAD

*For the safety of the users
in position « open »*



CLOSE : USE AT WORK

*For a maximum of visibility and
handiness in position « closed »*



ADJUSTABLE IN ROAD AND WORK POSITION

In a few seconds, adjustable and folding without tools and without physical efforts



Take out the 2 spindles and remove the push bar. And, tidy up in the spaces provided



Unlock and bend the external light, then lock.



Unscrew 2 thread rings, to make slide the bumper to obtain least congestion



Fold up then lock with the thread ring

BUMPER

ADAPTATION ON LESTAGRI WEIGHTS

Compatible on single bloc and modular weights from 600 kg to 2000 kg.



ADAPTATION ON EUROMASSE WEIGHTS

Compatible on :

- on basic weights 850 kg and 1400 kg
- on modular weights from 800 kg to 1200 kg and 1400 kg
- on modular weights 1450 kg, 1850 kg, 2050 kg, 2250 kg, 2450 kg and 2850 kg



BUMPER

NEW!

ECO-BUMPER

ADVANTAGES OF BUMPER AT REDUCED COSTS



- ✓ **COMFORT** adjustable in width, and not physical effort
- ✓ **COMPACT** foldable on each side laterally to the weight, according to needs and jobs.
- ✓ **COMPATIBLE** and adaptable to all our weights from 500 kg Lestagri and Euromasse, basic weight and modular weight (except EVO weight 600 kg)
- ✓ **COMPLETE** delivered with red and white reflectors, sights and marker lights
- ✓ **ATTRACTIVE** matches tractor colour.
- ✓ **CUSTOMIZABLE**, concession logo on the weight.



PARE-CHOC

REAR WEIGHTS

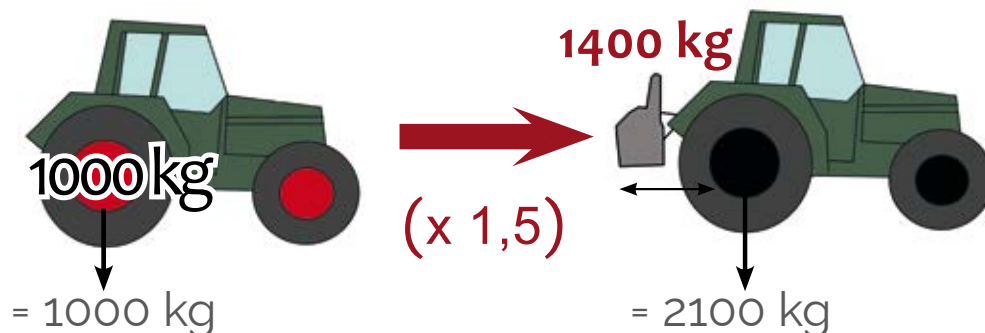
SOLUTIONS TO LOAD THE REAR HITCH

To ballast in the rear position, we offer **4 possibilities** :

- The EUROMASSE basic weights with or without the tool traction frame
- The EUROMASSE modular weights with 2 coupling positions.
- LESTRACTION modular traction weights from 1900 Kg to 2500 Kg

ADVANTAGES OF REAR BALLAST

- ✓ Replace wheel weights
- ✓ Avoid wheel-slip
- ✓ Reduce tyre wear
- ✓ Reduce fuel consumption
- ✓ Increase productivity



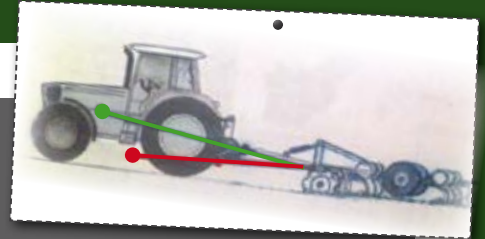
- ✓ Having a basic weight on the rear lifting provides **leverage that multiplies the weight by 1.5 at the rear wheels.**

Example:

- Basic weight of **850 kg** at the rear = **is the equivalent of around 1300 kg.**
- Basic weight of **1400 kg** at the rear = **equivalent to approx. 2100 kg**



REAR WEIGHTS



✓ The EUROMASSE concept optimises grip for all types of tools.

In difficult conditions, the convergency line (traction line, shown in green in the diagram below) should rise slightly towards the tractor. This process is simple with the Euromasse weights ballasting and tool traction solutions.

✓ The lifting height is decisive, and the tool remains firmly anchored in the ground (drawbar can be adjusted). The tractor oscillating bar is often positioned too low (red line on diagram), which causes tractor wheel-slip.

✓ This concept of rear weights for traction provides maximum grip, with total visibility of the tool and a tighter turning radius.



EVOLUTIVE RANGE OF EUROMASSE

See our videos on :
euromasse.com
lestagri.fr

6 possible weights :

600 kg / 1 000 kg / 1 200 kg / 1 450 kg / 1 850 kg / 2 250 kg.

- ✓ Possibility of **modulating the weights according to the needs**,
- ✓ **Replace wheel weights** for drawn tool traction.
- ✓ **Ample drawbar clearance**, for simple coupling to the oscillating bar and to the tractor eye bolt, for traction of trailed tools
- ✓ **Eliminate wheel-slip** : tractor grip.
- ✓ **Reduce tyre wear** and reduce fuel consumption



REAR WEIGHTS

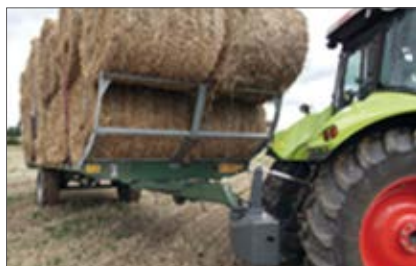
EUROMASSE BASIC WEIGHT 850 KG AND 1400 KG

A multi-function 3-point extension :

- ✓ Firmly screwed into metal inserts cast in the iron.
- ✓ Mounted in mortise-tenon for irreproachable quality, strength and finish.
- ✓ Drawbar tool traction up to 12 tons.
- ✓ Easy to use : drawbar clearance on reverse slope and when turning



This extension also exists for LESTAGRI basic and modular weights from 900 kg to 2000 kg, giving a traction capability of up to 8 tons.



Accessory : traction frame A and B

- ✓ Flexibility : quick to install and remove.
- ✓ Very low centre of gravity = better grip and increased productivity.
- ✓ Excellent visibility of tool while working.
- ✓ Multi-function: compatible at front and rear of tractor.

✓ ***The traction frame for semi-carried tools (A)*** is adjustable in cat. 2 and cat. 3 by simply reversing the hooks. Ballasting is simplified with automatic pinning. It accepts semi-carried tools (Cover Crop, harrow, semi-direct, etc.) in 2-point couplings

✓ ***The traction frame for drawn tools (B)*** allows ring tools to be used, for enhanced grip.



REAR WEIGHTS

LESTRACTION : 1 900 KG - 2 500 KG

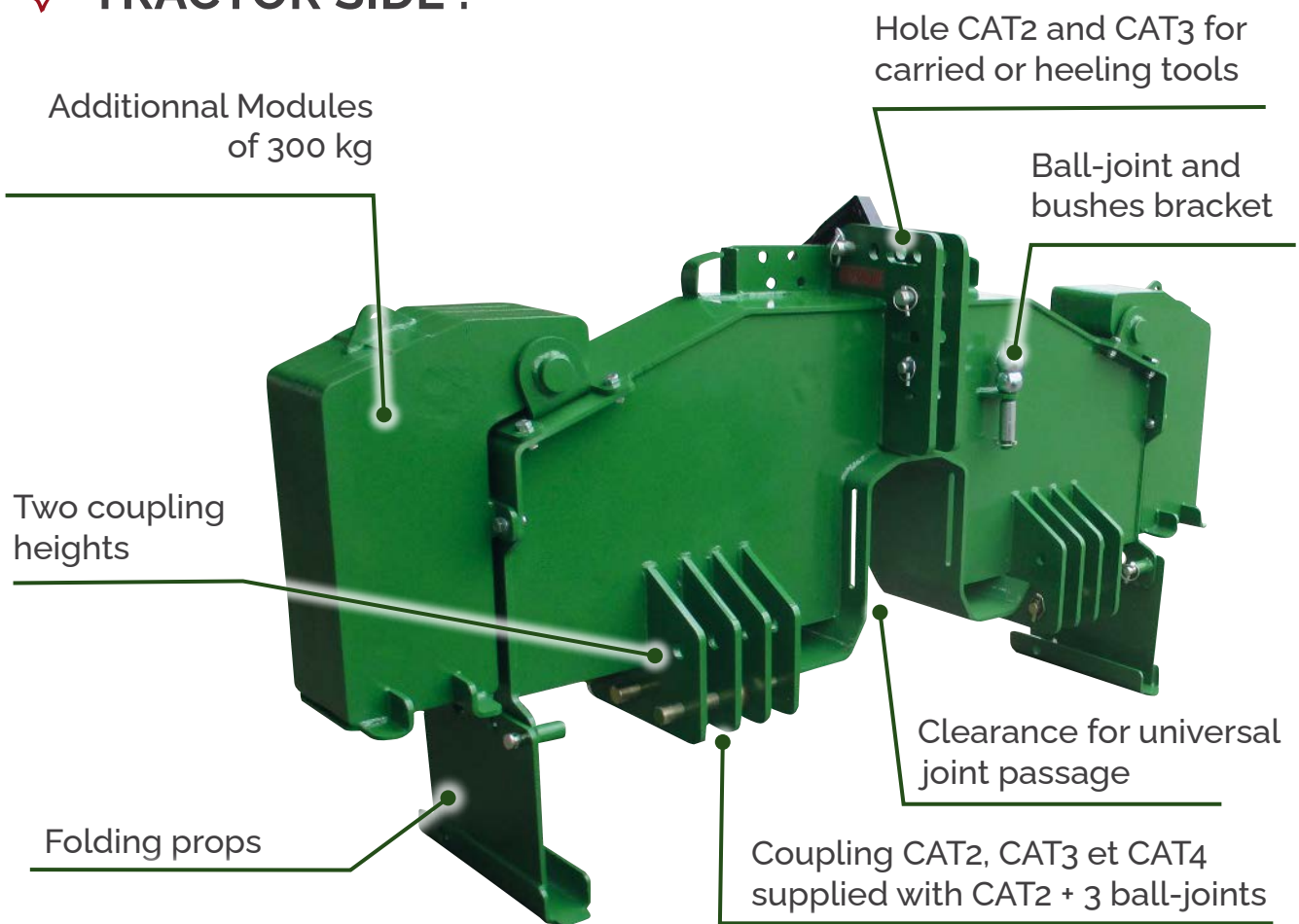
See our videos on :
euromasse.com
lestagri.fr

- ✓ Modular from 1900 kg to 2500 kg, using additional weights of 300 kg.
- ✓ Simple, easy and quick, couples and uncouples without physical efforts and without tools. 2 coupling heights in cat 2, cat 3 and cat 4 N.
- ✓ Allows all types of tool to be drawn : carried, semi-carried and drawn, with or without power drive output.
- ✓ Excellent visibility of the tool while working, due to the weight density.
- ✓ Increases productivity.
- ✓ Replace wheel weights.
- ✓ Reduces tyre wear
- ✓ Supplied complete, ready to use.
- ✓ Option : drawbar and universal joint adjustable in height, for drawn tools using the power drive output.
- ✓ Coupling to all brands and all types of tractor



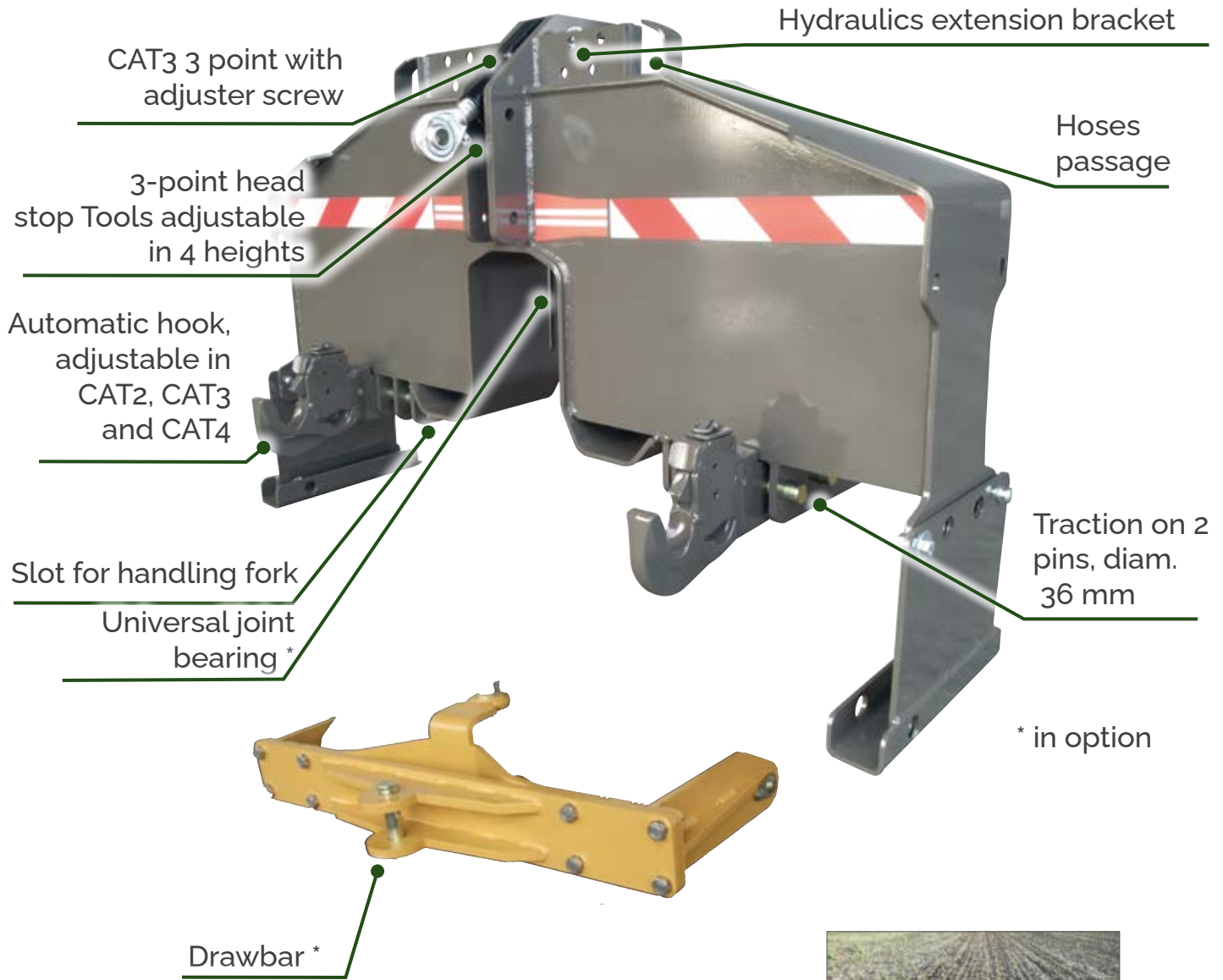
REAR WEIGHTS

✓ TRACTOR SIDE :



REAR WEIGHTS

✓ TOOL SIDE :





Tel. +33 (0)5 82 81 97 50

lestagri.euromasse@gmail.com

euromasse.com

lestagri.fr